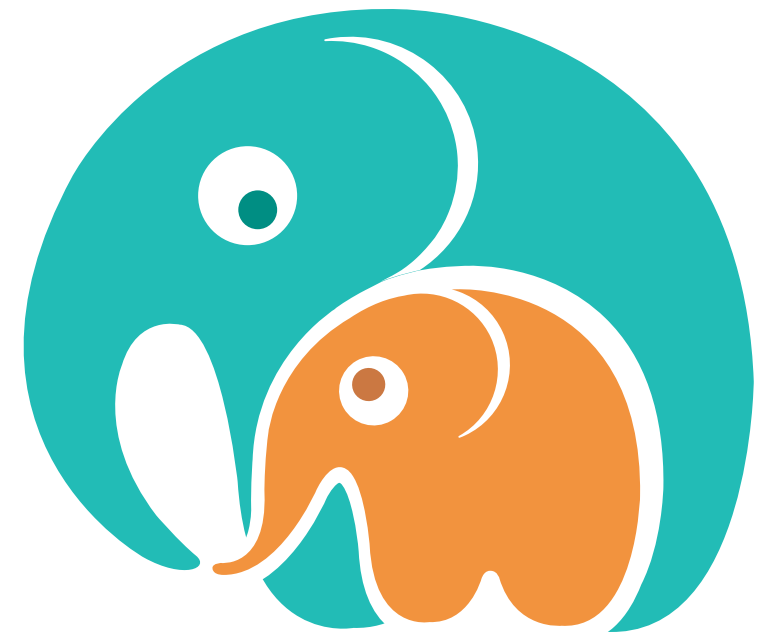




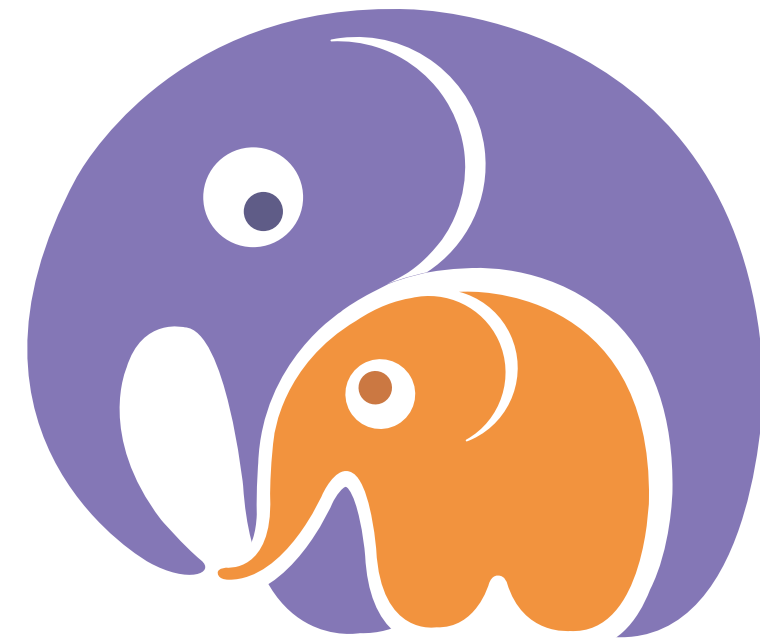
**Ed Smith Creative**

7 Morrell Close, Luton, Bedfordshire, LU3 3XB  
[www.edsmithcreative.co.uk](http://www.edsmithcreative.co.uk) | [ed@edsmithcreative.co.uk](mailto:ed@edsmithcreative.co.uk) | +44 (0)7889 973 422



# CHUMS

**Mental Health and  
Emotional Wellbeing Service**



# CHUMS CHARITY

**SUPPORTING MENTAL HEALTH  
IMPROVING LIVES**

## CHUMS & CHUMS CHARITY

Supporting the CHUMS Mental Health and Wellbeing Service, based in Silsoe, Bedfordshire, and the associated Charity with a wide range of creative and marketing services including:

- Graphic Design
- Content Production for Social Media
- Animation
- Video Production and Editing
- Brand Consulting
- Award Writing
- Appeals
- Logo Design
- Website Management

**CYCLE INDIA & TAJ MAHAL**  
18th FEBRUARY 2023 - 10 DAYS

- Cycle 450kms through Rajasthan, known as 'Land of the Kings'
- Tackle a great variety of terrains
- Visit the tigers at Ranthambore National Park
- Step inside the Taj Mahal, one of the seven wonders of the modern world
- Discover the chaotic magic of India's capital

**BOOK TODAY:**  
Email: [emma.stewart@chumscharity.org](mailto:emma.stewart@chumscharity.org)

**JUMP FOR CHUMS SKYDIVE!**  
15th MAY 2022

Are you looking for the ultimate adrenaline rush? NOTHING can beat the feeling of free falling from an airplane other than doing it whilst raising money for CHUMS. SIGN UP TODAY!

**CHUMS CHARITY**  
SUPPORTING MENTAL HEALTH  
IMPROVING LIVES

Registered Charity No. 1179048

Email: [emma.stewart@chumscharity.org](mailto:emma.stewart@chumscharity.org)

**CYCLE LONDON TO PARIS**  
14th JUNE 2023 - 5 DAYS

- Cycle 435kms over one long weekend
- Depart from England's bustling capital, London
- Ride through beautiful French countryside
- Celebrate the completion of your challenge at the Eiffel Tower
- Return in comfort on the Eurostar from Paris

**BOOK TODAY:**  
Email: [emma.stewart@chumscharity.org](mailto:emma.stewart@chumscharity.org)

**WING WALK FOR CHUMS**

**CHUMS CHARITY**  
SUPPORTING MENTAL HEALTH  
IMPROVING LIVES

Registered Charity No. 1179048

Email: [emma.stewart@chumscharity.org](mailto:emma.stewart@chumscharity.org)



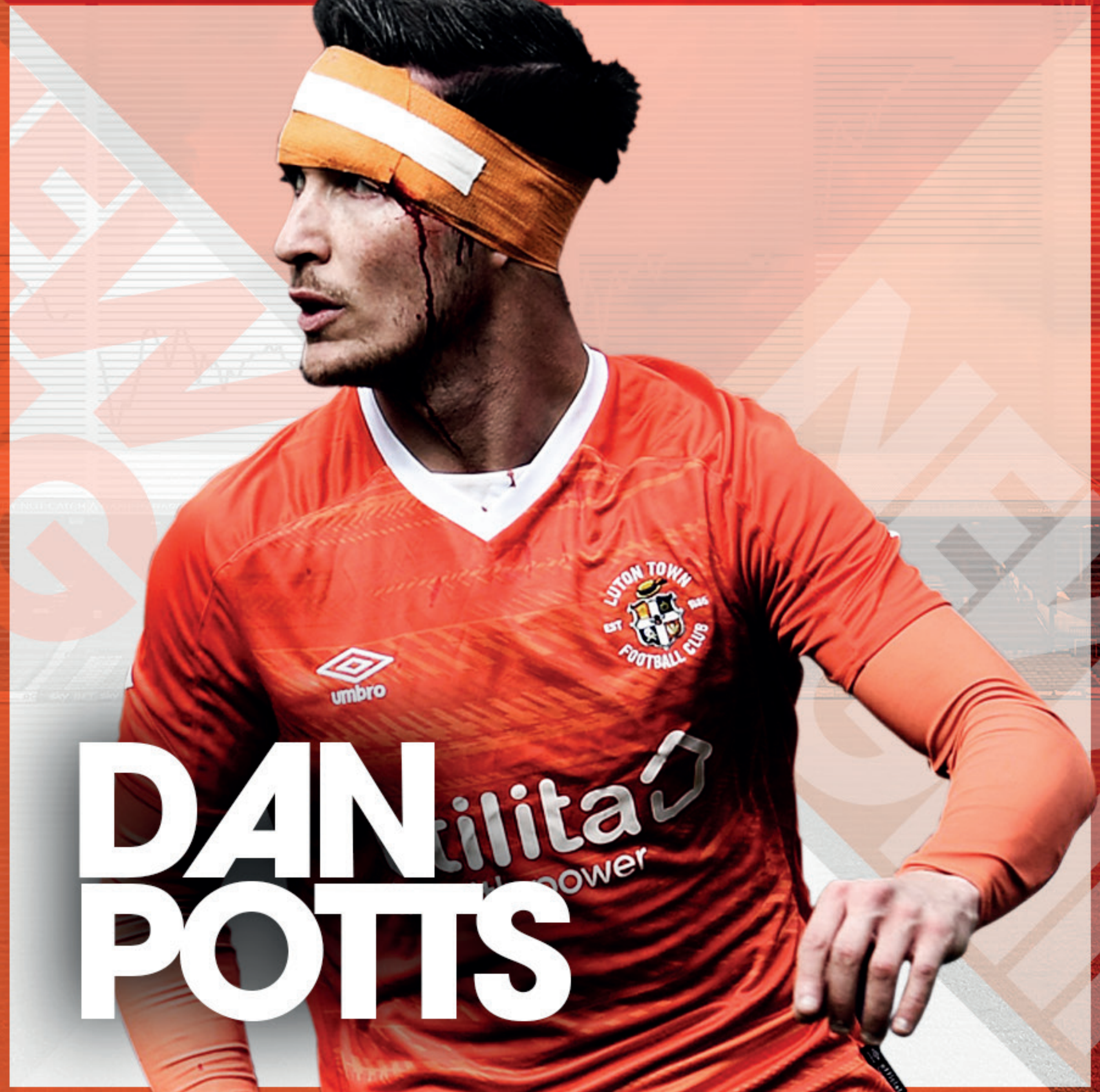


# LUTON TOWN FOOTBALL CLUB

Supporting the Luton Town Football Club Commercial, Retail and Communications functions with a wide range of creative and marketing services including:

- Graphic Design
- Matchday Programme Design
- Website Management
- Social Media Content Creation
- Powerpoint Design
- Photography
- Illustration

WELCOME TO KENILWORTH ROAD



# DAN POTTTS

NEW SIGNING | NEW SIGNING



**BELIEF  
PROGRESS.  
PRIDE.**

# JIMMYHUTTONTHERAPY.CO.UK

Branding and Website Build for Jimmy Hutton - Cognitive Hypnotherapist.

07392 242 442 jimmy@jimmyhuttontherapy.co.uk f t i r

JIMMY HUTTON THERAPY

HOME  
ABOUT ME  
EXPLAINING COGNITIVE HYPNOTHERAPY  
WHO I CAN HELP  
THERAPY SESSIONS  
JIMMY'S BLOG  
CONTACT JIMMY

NCH  
CERTIFIED REGISTERED NCH MEMBER

JIMMY HUTTON THERAPY

A happier, freer, more connected you

Hypnotherapy: Wimbledon, London & Online

95% of our brain activity is unconscious. This is a good thing because otherwise even the most mundane tasks like brushing your teeth would pose their challenges. And yet, this means we are very rarely in complete control.

*"We don't see things as they are; we see them as we are."*  
— Anaïs Nin

# WORLDAPPEAL.ORG.UK

Branding and Website Build for WORLD APPEAL Charity.

## Welcome to worldappeal.org.uk

World Appeal was founded in 2011 by a group of altruistic individuals committed to making a difference to the neediest and most vulnerable in society.

We began by providing vital support across the developing world working to prevent and relieve poverty, improve educational literacy and tackle the urgent problem of scarcity of clean drinking water. In addition, we operate projects caring for orphans, supporting the development of local schools and through the installation of water pumps and water wells. We also provide emergency and disaster relief as part of the organisation's response to global humanitarian crises.

Support us, and find out more about our mission.

The banner features the World Appeal logo, a man in a white thobe, a woman in a pink hijab, and illustrations of cows and sheep. The text 'QURBANI' is prominent, with the subtitle 'FOLLOW THE SUNNAH OF IBRAHIM 'ALAYHIS SALAAM'. A purple diagonal banner in the top right corner says 'FROM £40'. Social media icons for Facebook, Twitter, Instagram, and LinkedIn are listed on the left. The 'giftaid it' logo is at the bottom right.

GROUP 1	GROUP 2	GROUP 3
PART COW: £40	PART COW: £65	SHEEP: £220
EAST AFRICA	PAKISTAN	MIDDLE EAST
INDIA	KASHMIR	PALESTINE
ROHINGYA REFUGEES	BANGLADESH	SYRIA

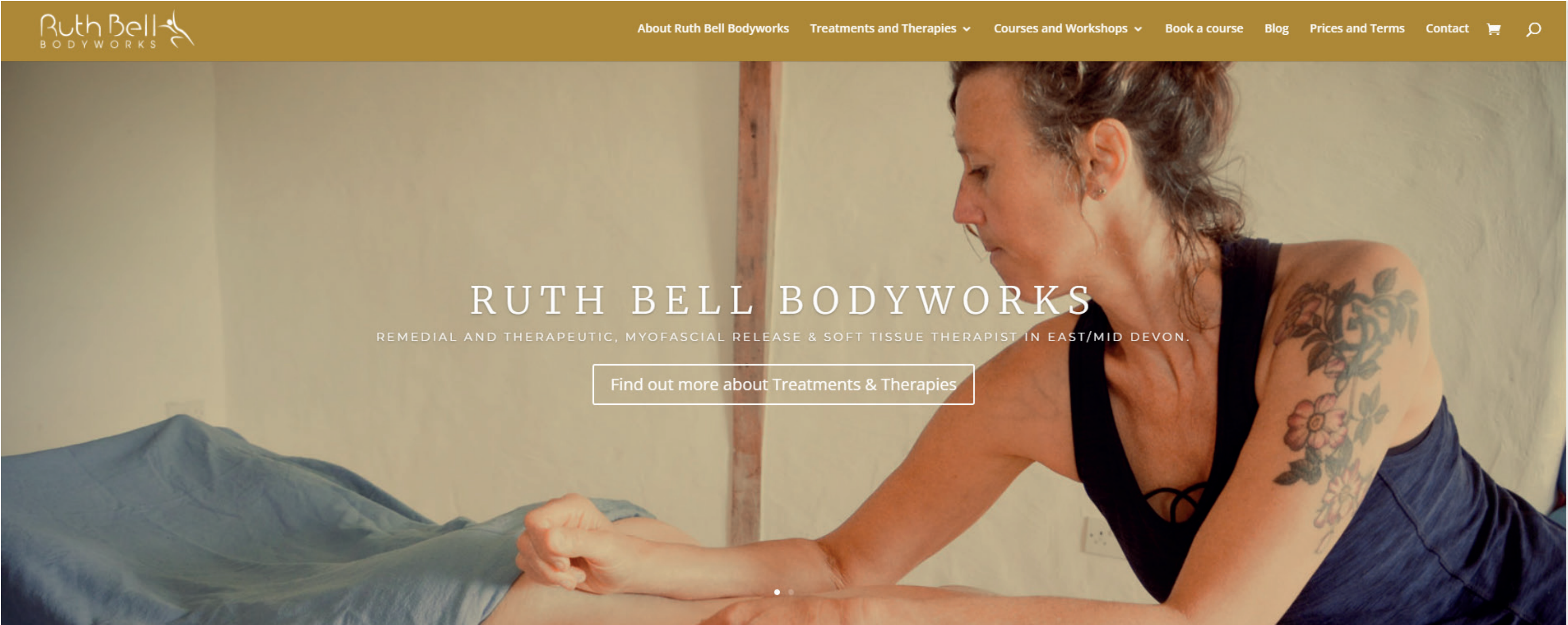
GROUP 1 - PART COW: £40	GROUP 2 - PART COW: £65	GROUP 3 - SHEEP: £220
EAST AFRICA	PAKISTAN	MIDDLE EAST
INDIA	KASHMIR	PALESTINE
ROHINGYA REFUGEES	BANGLADESH	SYRIA

£40 ONE OFF DONATION:	£65 ONE OFF DONATION:	£220 ONE OFF DONATION:
<input type="button" value="DONATE £40"/>	<input type="button" value="DONATE £65"/>	<input type="button" value="DONATE £220"/>

# RUTHBELLBODYWORKS.CO.UK

Branding and Website Build for Ruth Bell - Massage Therapist



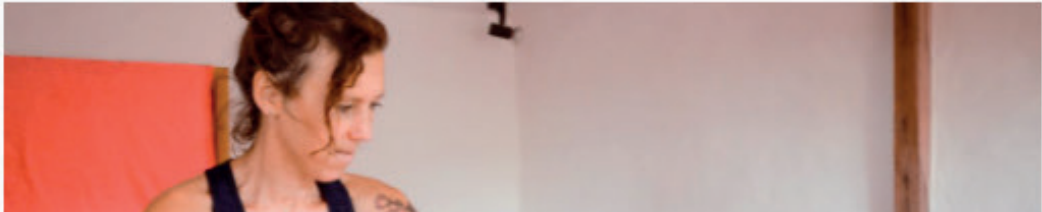
## RUTH BELL BODYWORKS

REMEDIAL AND THERAPEUTIC, MYOFASCIAL RELEASE & SOFT TISSUE THERAPIST IN EAST/MID DEVON.

[Find out more about Treatments & Therapies](#)

### Hi! I'm Ruth Bell.

I began practising massage & bodywork over 13 years ago, after training with





# KATETILSTON.CO.UK

Branding, website build, and general design and marketing support for  
Kate Tilston, Practical Life Coach



Kate Tilston - Practical Life Coach

# THE PILATES POD - HITCHIN

Creative Direction, Website, Photography, Graphic Design and Marketing.



[HOME](#)

[GET THE PILATES POD APP](#)

[PILATES FOR BEGINNERS](#)

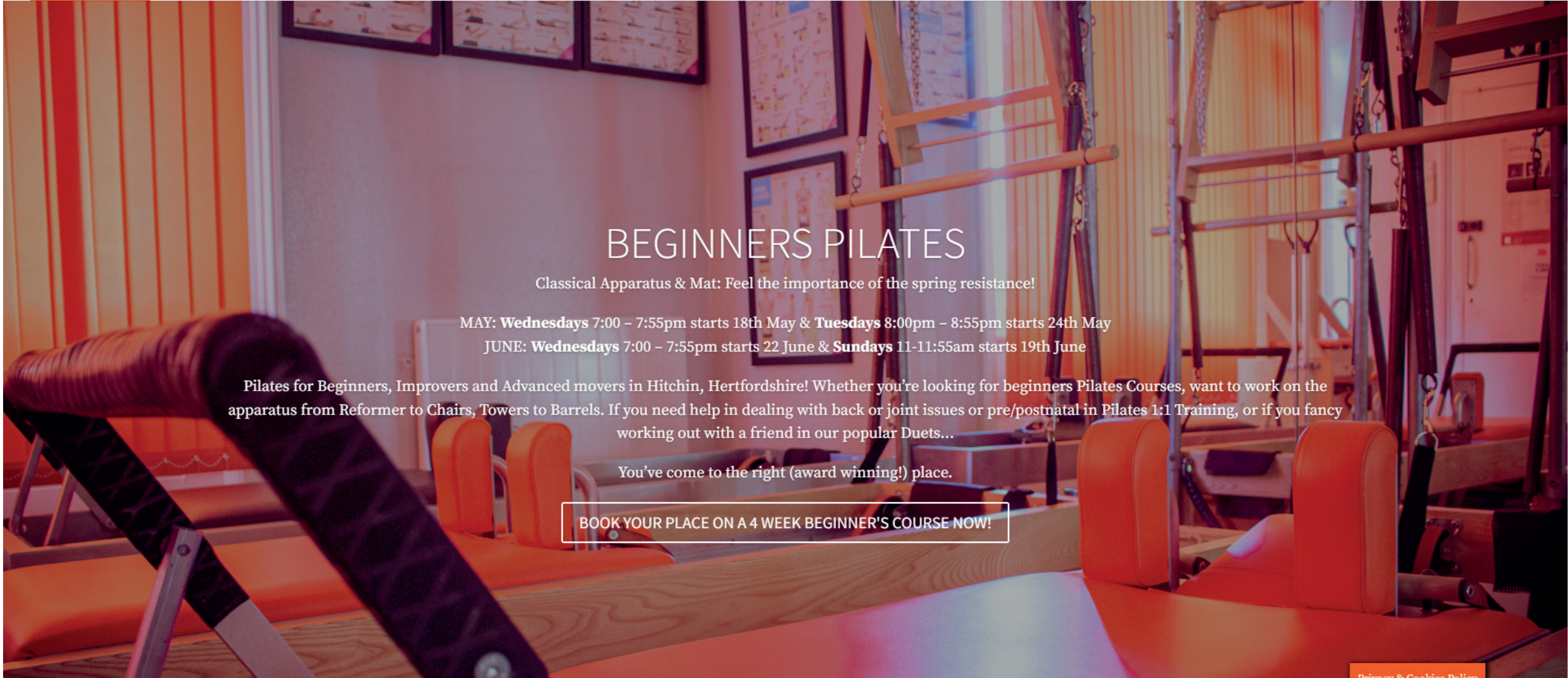
[PILATES CLASSES & PRIVATE TRAINING](#)

[ABOUT US](#)

[GIFT VOUCHERS](#)

[CONTACT US](#)

[CLIENT LOGIN](#)



## BEGINNERS PILATES

Classical Apparatus & Mat: Feel the importance of the spring resistance!

MAY: **Wednesdays** 7:00 – 7:55pm starts 18th May & **Tuesdays** 8:00pm – 8:55pm starts 24th May

JUNE: **Wednesdays** 7:00 – 7:55pm starts 22 June & **Sundays** 11-11:55am starts 19th June

Pilates for Beginners, Improvers and Advanced movers in Hitchin, Hertfordshire! Whether you're looking for beginners Pilates Courses, want to work on the apparatus from Reformer to Chairs, Towers to Barrels. If you need help in dealing with back or joint issues or pre/postnatal in Pilates 1:1 Training, or if you fancy working out with a friend in our popular Duets...

You've come to the right (award winning!) place.

[BOOK YOUR PLACE ON A 4 WEEK BEGINNER'S COURSE NOW!](#)

# MEZZALAMAG.CO.UK

Website design and Build, Branding, Graphic Design

